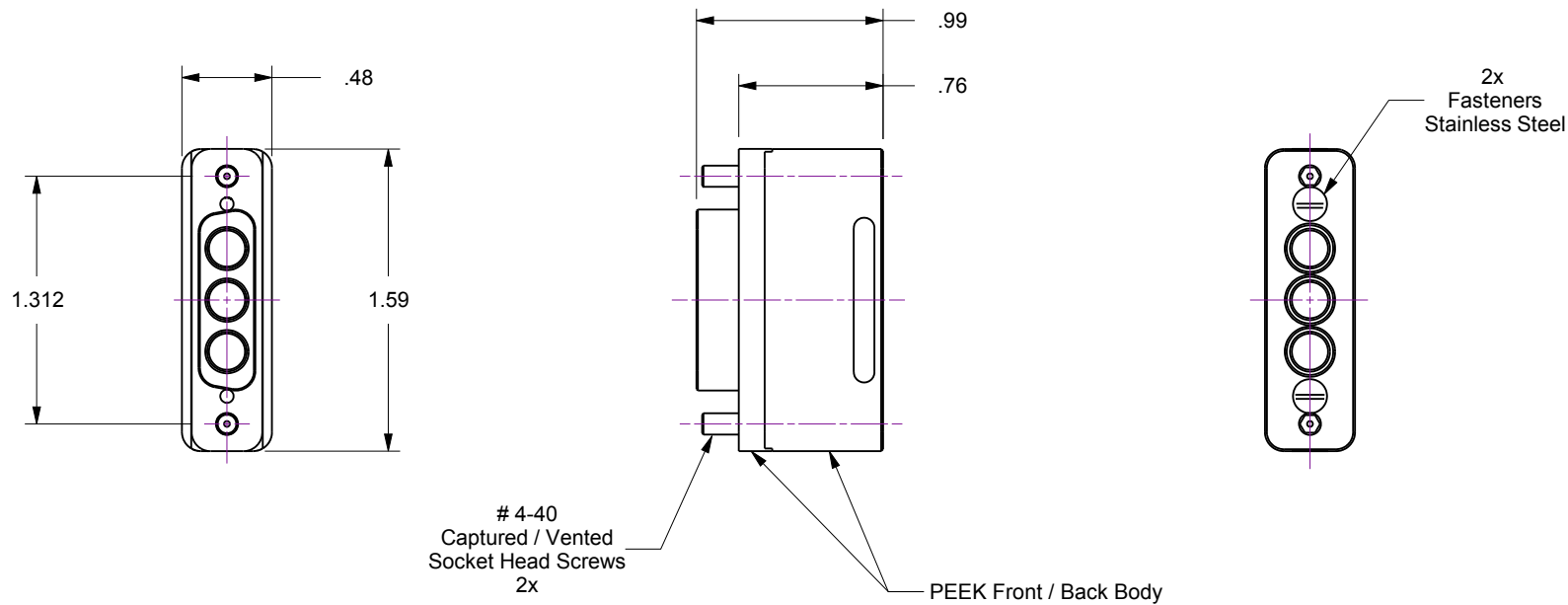
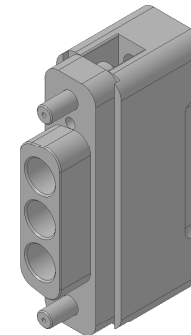


Notes

1. Dimensions symmetrical about centerlines
2. Related Hardware (slod separately)
101000 / Contact, Type-T3 / 0.142 Female Sockets
101080 / Contact crimp tool
100935 / Contact extraction tool

Rev.	Description	Date	Made By	Approval
A	Initial Release			



15D-3P-PKS



Accu-Glass Products Inc.
25047 Anza Drive
Valencia, CA 91355
T 818-365-4215
F 818-365-7074
www.accuglassproducts.com

UNCONTROLLED WEB DRAWING

Proprietary and Confidential
The information contained in this drawing is the sole property of Accu-Glass, Products Inc. Any reproduction, in part or as whole, without the written permission of Accu-Glass Products, Inc., is strictly prohibited.

Material

assembly

Tolerances,
unless otherwise specified

.X ± .030

.XX ± .010

.XXX ± .005

Angles ± 0.5°

Finish 63Ra

Title

PEEK 3 PIN POWER CONNECTOR ASSY

Drawn by
DateCR
3/22/2010No. **101009**Rev.
A

Approved

Sheet 1 OF 1