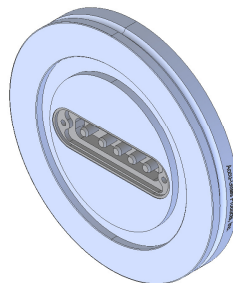


Notes

1. Leak Tested To 5x10E-10 standard cc/se of He.
2. Dimensions Symmetrical About Centerlines.
3. Break All Sharp Edges, .005 - .010, Unless Otherwise Noted.
4. Protect Knife-Edge (seal surface) From Damage.



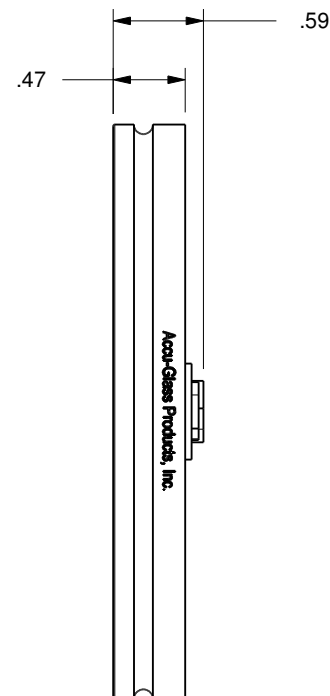
Flange, NW63 LF
Stainless Steel, 304
Ø3.74

Feedthrough, 5P-Stndrd

4x 4-40 UNC-2B

TIG

5x Ø.142



Rev.	Description	Date	Made By	Approval
A	Initial Release	12/12/2013	Ligeti	

UNCONTROLLED WEB DRAWING

Proprietary and Confidential
The information contained in this drawing is the sole property of Accu-Glass, Products Inc. Any reproduction, in part or as whole, without the written permission of Accu-Glass Products, Inc., is strictly prohibited.

Material
See Individual Components

Tolerances,
unless otherwise specified

.X ± .030

.XX ± .010

.XXX ± .005

Angles ± 0.5°

Finish 63Ra

Title

25D-5P-L63

Drawn by
Date

Ligeti
12/12/2013

No. **100942**

Rev.

A

Approved

Sheet



Accu-Glass Products Inc.
25047 Anza Drive
Valencia, CA 91355
T 818-365-4215
F 818-365-7074
www.accuglassproducts.com