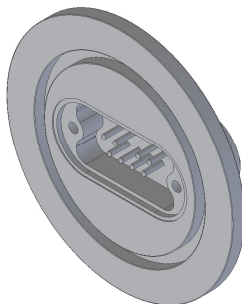
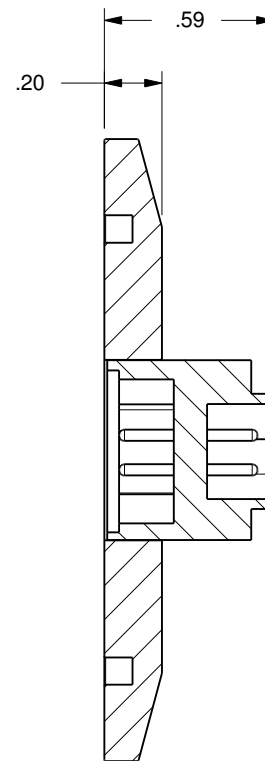
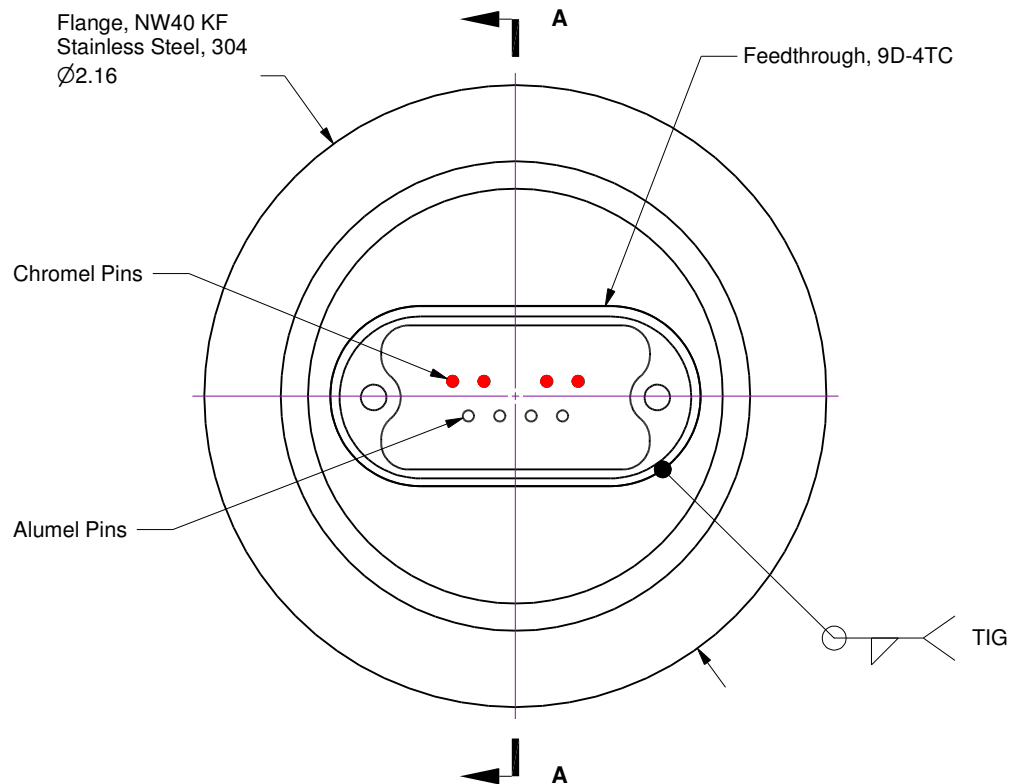


## Notes

1. Leak Tested To  $5 \times 10^{-10}$  standard cc/se of He.
2. Dimensions Symmetrical About Centerlines.
3. Break All Sharp Edges, .005 - .010, Unless Otherwise Noted.
4. Protect flange (O-ring) Seal Surface and Feedthroughs From Damage.



Rev.	Description	Date	Made By	Approval
A	Initial Release	11/11/2009	CR	



Section A-A

**UNCONTROLLED WEB DRAWING**

Proprietary and Confidential  
The information contained in this drawing is the sole property of Accu-Glass, Products Inc. Any reproduction, in part or as whole, without the written permission of Accu-Glass Products, Inc., is strictly prohibited.

Material  
See Individual Components

Tolerances,  
unless otherwise specified

.X ± .030	Angles ± 0.5°
.XX ± .010	Finish 63Ra
.XXX ± .005	

Title

9D-8TC-K40

Drawn by  
Date

CR  
11/11/2009

No. **100791**

Rev.

**A**

Approved

Sheet



**Accu-Glass Products Inc.**  
25047 Anza Drive  
Valencia, CA 91355  
T 818-365-4215  
F 818-365-7074  
www.accuglassproducts.com