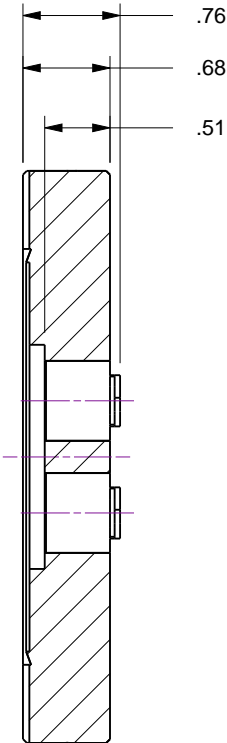
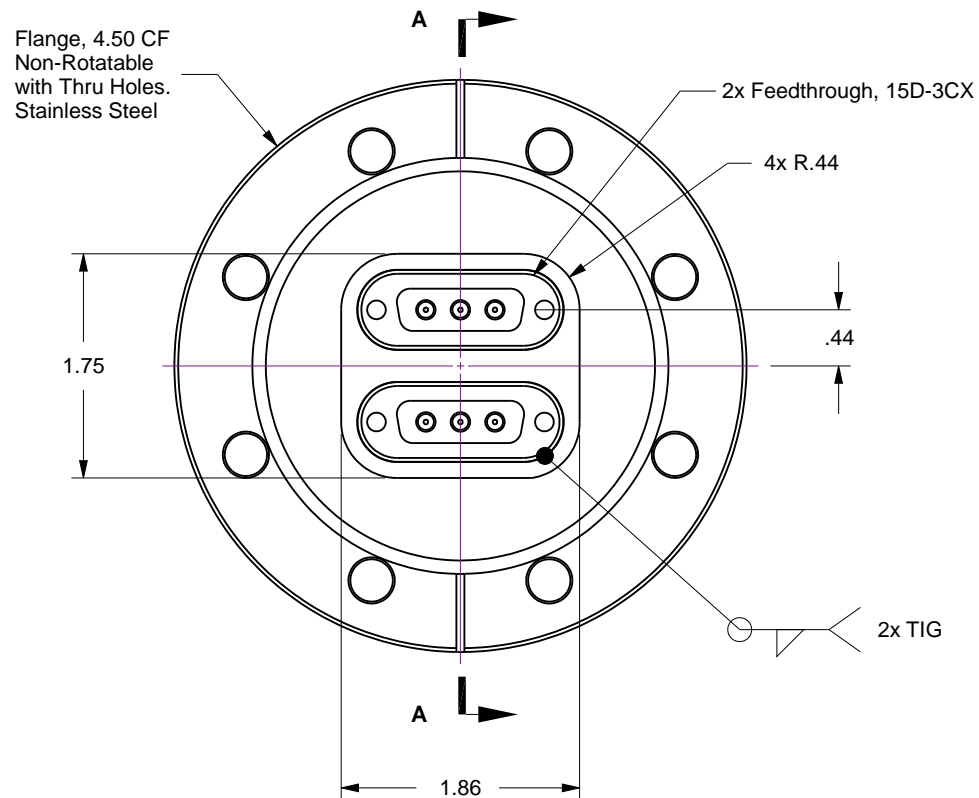
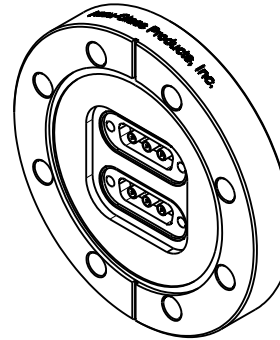


Notes

1. Leak Tested To 5x10E-10 standard cc/se of He.
2. Dimensions Symmetrical About Centerlines.

Rev	Description	Date
A	Initial Release	



Section A-A

UNCONTROLLED WEB DRAWING

Proprietary and Confidential
The information contained in this drawing is the sole property of Accu-Glass, Products Inc. Any reproduction, in part or as whole, without the written permission of Accu-Glass Products, Inc., is strictly prohibited.

Material
See Individual Components

Tolerances,
unless otherwise specified

.X ± .030

.XX ± .010

.XXX ± .005

Angles ± 0.5°

Finish 63Ra

Title

15D-3CX2-450

Drawn by
Date

Farrell
3/16/2017

No. **100512**

Rev.

A

Approved

Sheet



Accu-Glass Products Inc.
25047 Anza Drive
Valencia, CA 91355
T 818-365-4215
F 818-365-7074
www.accuglassproducts.com