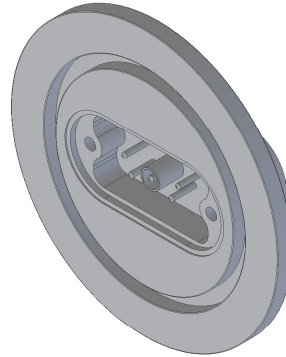


Notes

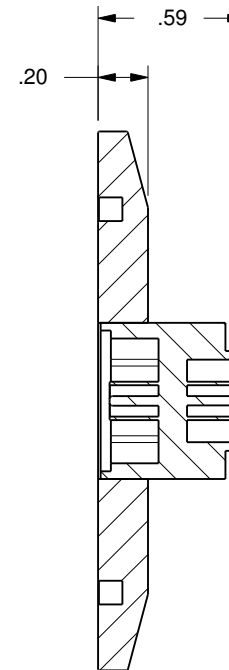
1. Leak Tested To 5x10E-10 standard cc/se of He.
2. Dimensions Symmetrical About Centerlines.
3. Break All Sharp Edges, .005 - .010, Unless Otherwise Noted.
4. Protect flange (O-ring) Seal Surface and Feedthroughs From Damage.



Flange, NW40 KF
Stainless Steel, 304
Ø2.16

Feedthrough, 9D-1CX4I

TIG



Section A-A



Accu-Glass Products Inc.
25047 Anza Drive
Valencia, CA 91355
T 818-365-4215
F 818-365-7074
www.accuglassproducts.com

UNCONTROLLED WEB DRAWING

Proprietary and Confidential
The information contained in this drawing is the sole property of Accu-Glass, Products Inc. Any reproduction, in part or as whole, without the written permission of Accu-Glass Products, Inc., is strictly prohibited.

Material
See Individual Components

Tolerances,
unless otherwise specified

.X ± .030	Angles ± 0.5° Finish 63Ra
.XX ± .010	
.XXX ± .005	

Title

9D-1CX4I-K40

Drawn by
Date

Farrell
7/20/2020

No. **100501**

Rev.
A

Approved

Sheet