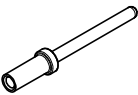
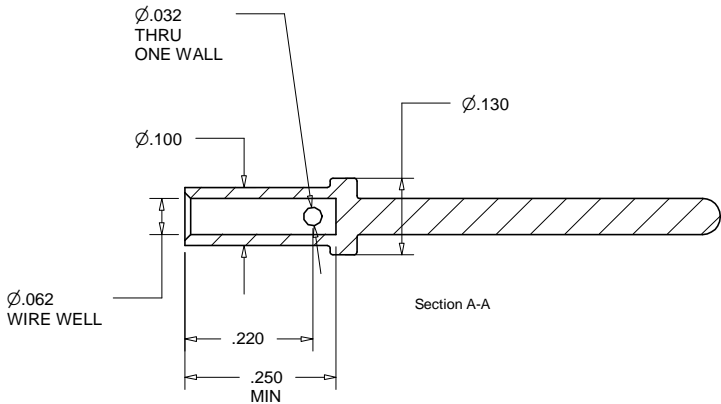
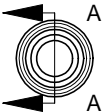
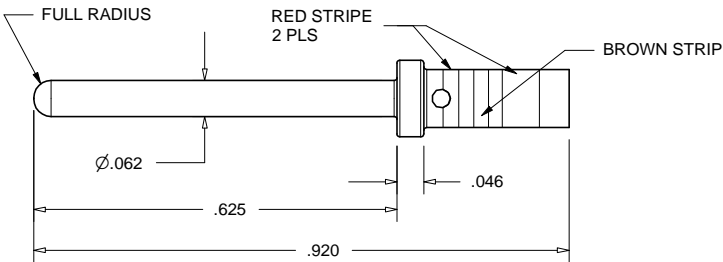


1  
2  
3  
4  
**PROPRIETARY AND CONFIDENTIAL**  
THE INFORMATION CONTAINED IN THIS  
DRAWING IS THE SOLE PROPERTY OF  
ACCU-GLASS PRODUCTS INC. ANY  
REPRODUCTION IN PART OR AS WHOLE  
WITHOUT THE WRITTEN PERMISSION OF  
ACCU-GLASS PRODUCTS INC.IS  
**PROHIBITED.**

Rev	Description	Date	Approved
A	INITIAL RELEASE		



SCALE  
1 : 1



Accu-Glass Products Inc.  
25047 Anza Drive  
Valencia, CA 91355  
TEL 818-365-4215  
FAX 818-365-7074  
accuglassproducts.com

Notes:  
1. DIMINSIONS SYMMETRICAL ABOUT CENTERLINES

**\*UNCONTROLLED WEB COPY\***

Material GOLD PLATED /  
COPPER ALLOY

Tolerances unless otherwise  
specified.

.X ± .03  
.XX ± .01  
.XXX ± .005  
Angular:  
+/- .5°  
Finish:  
Min. 63 Ra

Title: GP-M60-10  
GOLD PLATED MALE PIN CONTACT

Drawn By Date	CR 6/21/2010	DWG. NO. 110700	Rev. A
Approved	C M	PDFE	Sheet 1 OF 1