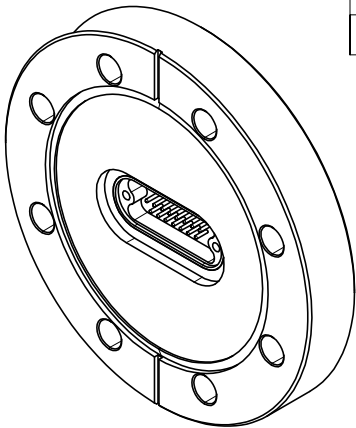


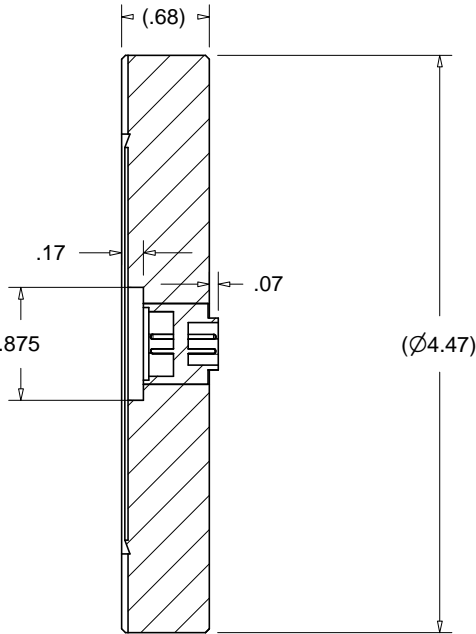
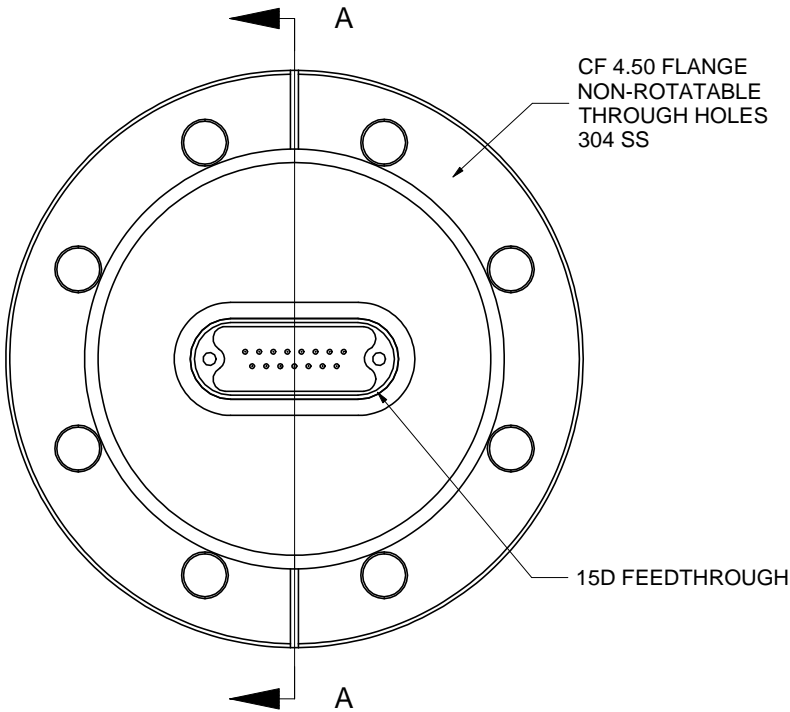
PROPRIETARY AND CONFIDENTIAL
THE INFORMATION CONTAINED IN THIS
DRAWING IS THE SOLE PROPERTY OF
ACCU-GLASS PRODUCTS INC. ANY
REPRODUCTION IN PART OR AS WHOLE
WITHOUT THE WRITTEN PERMISSION OF
ACCU-GLASS PRODUCTS INC.IS
PROHIBITED.

Specifications:

Voltage	500 VDC
Current	5A Max. @ 20° C (per pin up to 20% of total number of pins)
Temperature	-200 °C to 250° C
Vacuum Level	UHV 1x10 ⁻¹⁰ Torr.



Rev	Description	Date	Approved
A	INITIAL RELEASE	020810	C M



Section A-A

Related Flange Hardware	4.50" CF Flange
P/N 200810,	Copper Gasket
P/N 200813,	Bolts, Nuts and Washers set



Accu-Glass Products Inc.
25047 Anza Drive
Valencia, CA 91355
TEL 818-365-4215
FAX 818-365-7074
accuglassproducts.com

Notes:
1. No detectable leaks @ 5x10⁻¹⁰ cc/s He.

UNCONTROLLED WEB COPY

Material SEE ABOVE	
Tolerances unless otherwise specified.	
.X ± .03	Angular: +/- .5°
.XX ± .01	Finish:
.XXX ± .005	Min. 63 Ra

Title: 15D-450 CF 4.50 FLANGE WITH 15D FEEDTHROUGH			
Drawn By Date	CR 061009	DWG. NO. 100210	Rev. A
Approved	C M	PDFE	Sheet 1 OF 1