

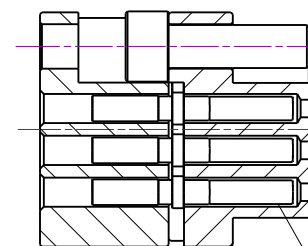
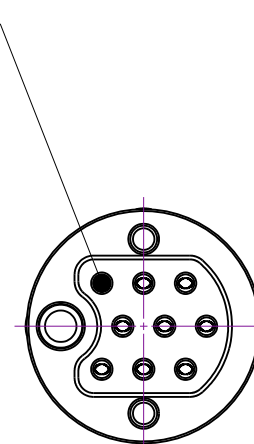
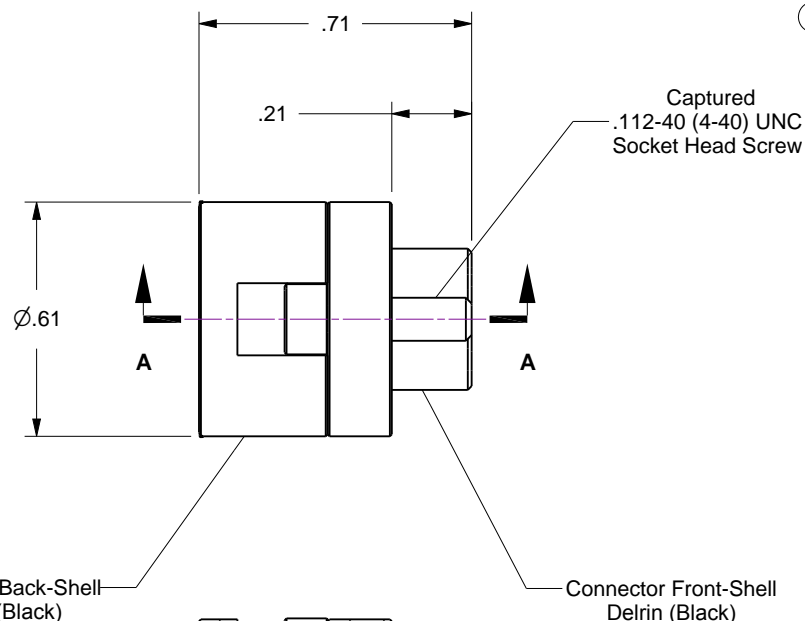
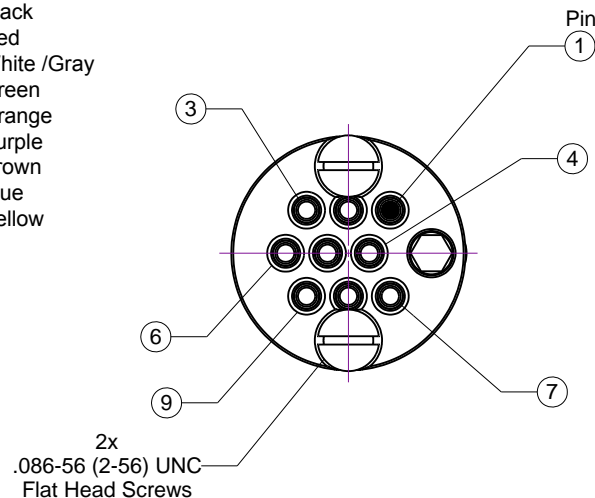
## Notes

- Caution!** When used with 9-Pin Subminiature-C feedthroughs (not shown), Pin-1 position is reversed (mirrored) from air to vacuum side. This is due to feedthrough's straight through (male-male) pin construction. This condition can be addressed in one of three ways...
  - Wire air-side (or vacuum-side) connectors accordingly...
  - Use an air-side (or vacuum-side) gender adapter...
  - Use a female-female extension cable assembly.
- Connectors do not include contacts... and these must be purchased separately.  
See table (below) for available contact options and tools.
- Thread wires through connector back-shell before crimping contacts.
- Pin position numbers do not appear on connector and are provided for reference only.

Rev	Description	Date
B	Remodeled	

**Typical Connector Pinout**

Pin	Wire Color
1	Black
2	Red
3	White /Gray
4	Green
5	Orange
6	Purple
7	Brown
8	Blue
9	Yellow

**Section A-A**

Contacts  
(not included, shown for reference only)

Part No.	Description	For Wire Size
100180	Standard	20-24 AWG
110908	High Duty Cycle	
100181	Standard	26-30 AWG
110909	High Duty Cycle	
100190	Crimp Tool for Type T1 Contacts	

**UNCONTROLLED WEB DRAWING**

Proprietary and Confidential  
The information contained in this drawing is the sole property of Accu-Glass, Products Inc. Any reproduction, in part or as whole, without the written permission of Accu-Glass Products, Inc., is strictly prohibited.

Material  
See Individual Components

Tolerances,  
unless otherwise specified

.X ± .030	Angles ± 0.5° Finish 63Ra
.XX ± .010	
.XXX ± .005	

Title

Connector, 9-Pin Subminiature-C Female

Drawn by	Ligeti	No.	Rev.
Date	9/17/2014	100160	B
Approved		PDFE	Sheet



**Accu-Glass Products Inc.**  
25047 Anza Drive  
Valencia, CA 91355  
T 818-365-4215  
F 818-365-7074  
www.accuglassproducts.com