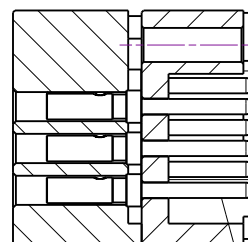
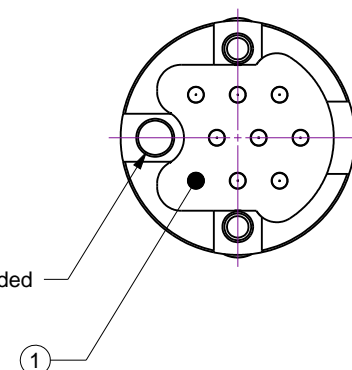
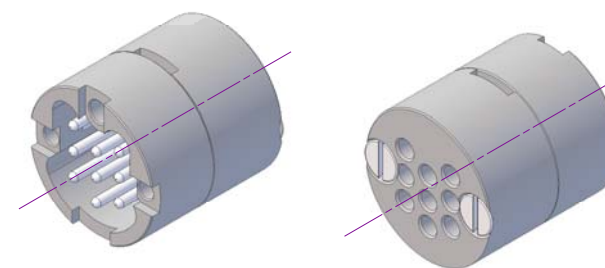
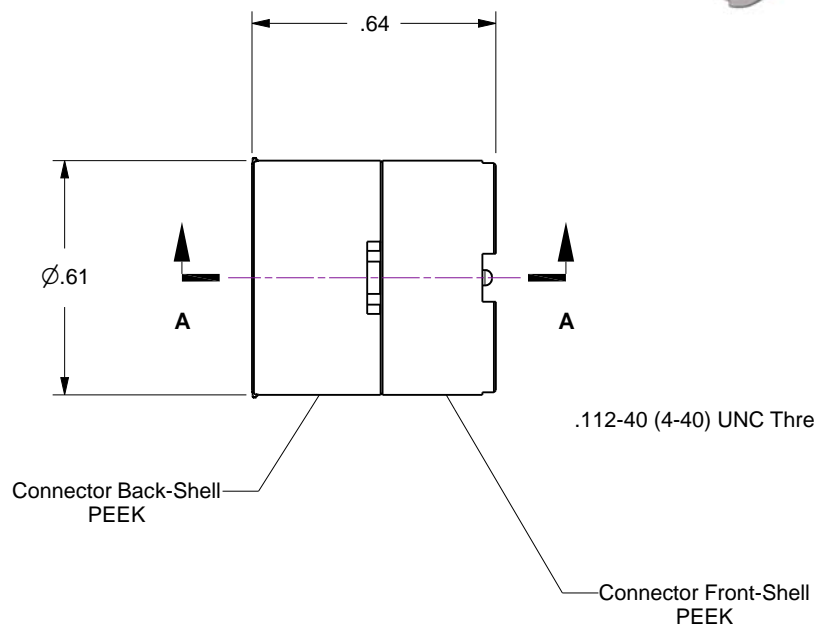
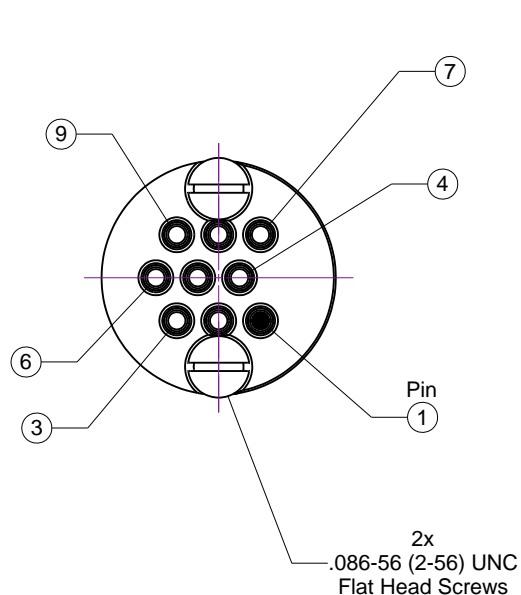


## Notes

1. Connectors do not include contact pins... and these must be purchased separately.  
See table (below) for available contact options and tools.
2. Thread wires through connector back-shell before crimping contacts.
3. Pin position numbers do not appear on connector and are provided for reference only.

Rev	Description	Date
B	Remodeled	



Section A-A  
(not included, shown for reference only)

Part No.	Contact Wire-Well	For Wire Size
100170	.043 / .047	20-24 AWG
100171	.023 / .027	26-30 AWG
100190	Crimp Tool for Type T1 Contacts	



**Accu-Glass Products Inc.**  
25047 Anza Drive  
Valencia, CA 91355  
T 818-365-4215  
F 818-365-7074  
www.accuglassproducts.com

### UNCONTROLLED WEB DRAWING

Proprietary and Confidential  
The information contained in this drawing is the sole property of Accu-Glass, Products Inc. Any reproduction, in part or as whole, without the written permission of Accu-Glass Products, Inc., is strictly prohibited.

Material  
See Individual Components

Tolerances,  
unless otherwise specified

.X ± .030	Angles ± 0.5° Finish 63Ra
.XX ± .010	
.XXX ± .005	

Title

Connector, 9-Pin Subminiature-C Male

Drawn by	Ligeti	No.	Rev.
Date	9/11/2014	100140	B
Approved		Sheet	