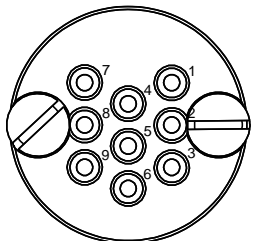
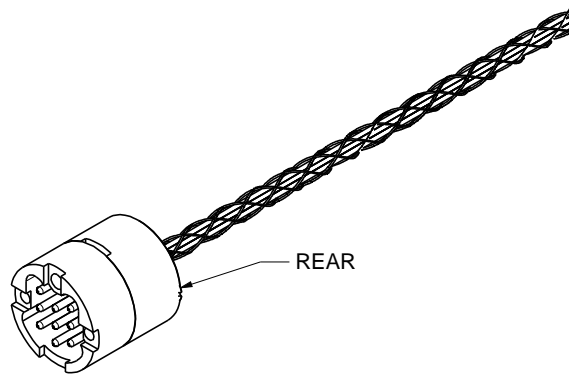


1  
2  
3  
4  
**PROPRIETARY AND CONFIDENTIAL**  
THE INFORMATION CONTAINED IN THIS  
DRAWING IS THE SOLE PROPERTY OF  
ACCU-GLASS PRODUCTS INC. ANY  
REPRODUCTION IN PART OR AS WHOLE  
WITHOUT THE WRITTEN PERMISSION OF  
ACCU-GLASS PRODUCTS INC.IS  
**PROHIBITED.**

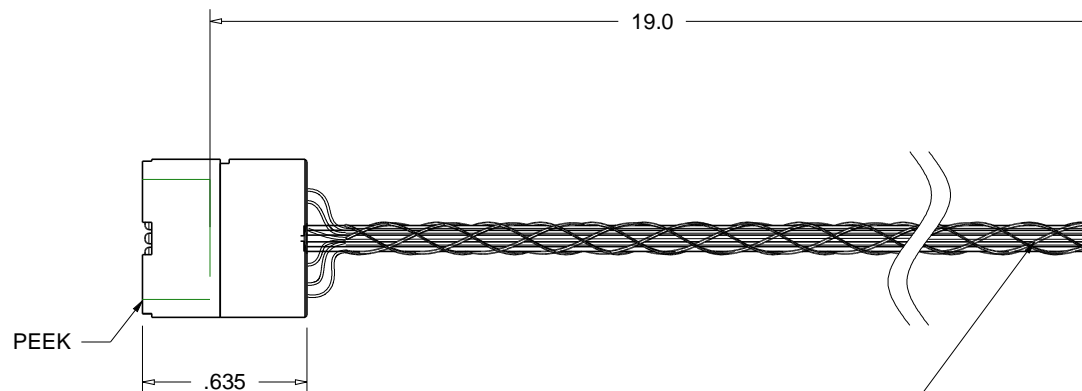
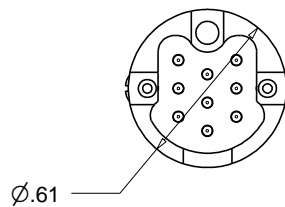
HOLE NUMBER ASSIGNMENTS  
REAR VIEW



NUMBERS DO NOT APPEAR  
ON PART



Rev	Description	Date	Approved
A	INITIAL RELEASE		
B	REMOVED COLOR CODE	120611	CM



9EA 28 AWG. STRANDED WIRES  
WITH KAPTON INSULATION AND  
A PEEK BRAID.



Accu-Glass Products Inc.  
25047 Anza Drive  
Valencia, CA 91355  
TEL 818-365-4215  
FAX 818-365-7074  
accuglassproducts.com

Notes:  
1. DIMENSIONS SYMMETRICAL ABOUT CENTERLINES

**\*UNCONTROLLED WEB COPY\***

Material  
SEE ABOVE

Tolerances unless otherwise  
specified.

.X ± .03	Angular: +/- .5°
.XX ± .01	Finish:
.XXX ± .005	Min. 63 Ra

Title: CKAP-C9-19PC  
PEEK MALE 9C, KAPTON WIRE 19" LONG

Drawn By Date	CR 102609	DWG. NO. 100030	Rev. B
Approved	CM	PDFE	Sheet 1 OF 1